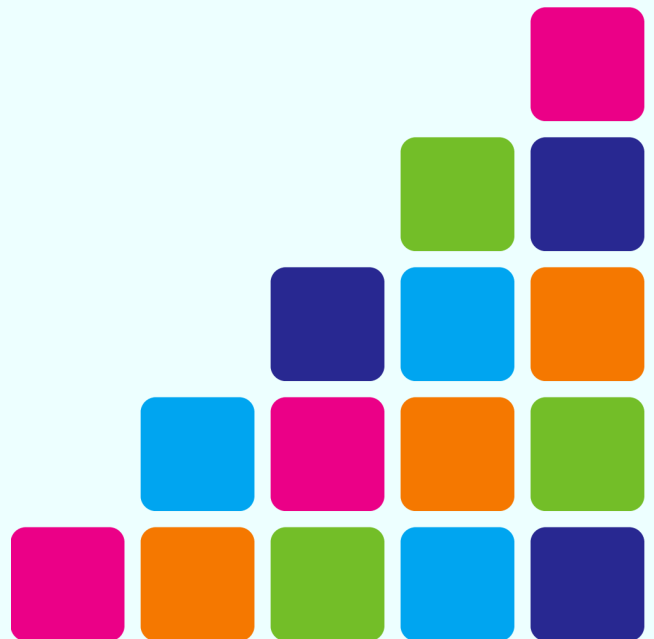


The International Student's Guide

Studying in English
at SGH

2025
2026



WELCOME!

Bitaem! Witamy! ;Hola! Welcome! Bienvenue! Herzlich Willkommen!
!ברוך הבא! أهلاً وسهلاً! 환영합니다! 欢迎!

Congratulations on becoming a student at SGH Warsaw School of Economics! We are sure that these upcoming years will be unforgettable and full of new opportunities, surrounded by new people in a whole new environment. Isn't this a chance to change your life for the better?

While the excitement of moving abroad is exhilarating, it's important to anticipate challenges not only related to your studies but also to relocating to a new country, preparing necessary documents, and adapting to your new surroundings. We hope that our guide will help you navigate these difficulties and ensure that all processes go as smoothly and comfortably as possible.

SGH is not just a place to study; it's a place to gain knowledge, unlock your potential, and showcase your leadership skills. Take full advantage of all the opportunities available to you!

If you have any questions that aren't answered in this guide, please visit the official university website at sgh.waw.pl.

Wishing you a successful and enriching journey at SGH!

*Maksim Kramaineuski, Editor-in-Chief
International Student's Guide Team 2025*

Before your Arrival

- 01** Check visa requirements
- 02** Find accommodation well in advance (dorm, shared apartment)
- 03** Gather all necessary documents
- 04** Arrange a health insurance
- 05** Prepare for expenses related to studying and living abroad
- 06** Keep a positive attitude because adaptation can be challenging, but it is also a unique opportunity for personal growth and development :)

After your Arrival

- 01** Obtain a SIM card
- 02** Obtain PESEL number
- 03** Gather all necessary documents
- 04** Pay for and collect your student card
- 05** Create a Trusted Profile
- 06** Open a Polish bank account

The organisation of the academic year 2025/2026 at the SGH Warsaw School of Economics

Event	Date
Classes in the winter semester in the academic year 2025/2026	01.10.2025 – 25.01.2026
Day off (All Saints' Day)	01 – 02.11.2025
Day off (National Independence Day)	10 – 11.11.2025
Days off (Christmas, New Year, Epiphany)	24.12.2025 – 06.01.2026
Winter examination session, 1st term	26.01 – 08.02.2026
Winter break	09 – 13.02.2026
Winter examination session, 2nd term	14 – 20.02.2026
Classes in the summer semester in the academic year 2025/2026	21.02.2026 – 14.06.2026
Days off (Easter)	03 – 08.04.2026
Days off (Public Holiday, Polish National Flag Day, 3rd May National Holiday)	01 – 03.05.2026
Days off (Pentecost)	23 – 24.05.2026
Day off (Corpus Christi)	04.06.2026
Summer examination session, 1st term	15 – 28.06.2026
Summer break	29.06.2026 – 17.09.2026
Summer examination session, 2nd term	18 – 24.09.2026



CIVICA ThinkTank

Ready to connect with **students from across Europe** and shape something exciting together?

Eager to co-organise different events for the whole CIVICA community?

Or maybe you're eager to collaborate with peers from other European University alliances and be part of a fresh, student-led initiative?

This is your chance to get involved.
Let's build something amazing—**together**.

forms.cloud.microsoft/e/zkqmuHPFLH

Fill out the form, and we'll be in touch with recruitment details soon

PESEL number and Polish bank account

What is it?

The PESEL number is a unique identifier assigned in Poland. Having a PESEL number entitles you to identification in the health service, obtaining identity documents, opening a bank account, facilitating processes in Polish institutions.

How to get PESEL?

To get a PESEL number you need to fill out an application and come to any District Office.

For more information visit:

<https://www.gov.pl/web/gov/uzyskaj-numer-pesel-dla-cudzoziemcow-en>

Student bank account

Student bank accounts are usually free, with no fees for card usage. Currently, an account without a residence permit or EU citizenship is opened by PKO bank. Other banks may refuse to open an account.

If you are under 18, you must come with one of the parents and then two combined accounts will be opened.

What documents are needed?

- Passport
- Polish phone number
- PESEL
- Permanent or temporary residence permit (not applicable to all banks, e.g. PKO Bank does not need these documents)

Recognition of Certificates Obtained Abroad (first-cycle)

Starting from July 1, 2025, NAWA Director issues recognition statements on a secondary education certificate confirming the right to apply for admission to first-cycle studies or long-cycle studies.

This refers to an individually issued decision confirming that a specific foreign secondary school certificate grants access to higher education in Poland.

Documents Required for Certificate Recognition

- Secondary school certificate giving access to higher education on which the recognition statement you wish to obtain
- Transcript of records / supplement / list of subjects and grades attached to the certificate (if applicable)
- Previous document of education – document which was the basis for the admission to secondary school
- Certified translations of all the above mentioned documents (unless they are issued in English, German, Spanish, Italian, Russian, Ukrainian, Belarusian)
- Identity card (passport)
- Document stating the change of surname
- Declaration filled in and signed by a parent or a legal guardian authorising to submit the application (in the case of a minor applicant)
- In the case of refugees – a refugee status document

Exemptions from the Procedure

The NAWA's Director individual recognition statement is not required in the case of secondary school certificates issued in EU, OECD or EFTA member countries, those included in international agreements on recognition of education (e.g. agreements with China or Ukraine) as well as IB and EB certificates.

You can find all the necessary information about this procedure via this link:

nawa.gov.pl/en/recognition/how-to-obtain-a-recognition-statement/secondary-school-certificate

Note: The NAWA's Director individual recognition statement is not required in the case of secondary school certificates already recognised by the Regional Educational Authority (Kurator Oświaty).

Recognition of Diplomas Obtained Abroad (second-cycle)

The NAWA Director issues individual recognition statements on a foreign diploma, confirming the completion of higher education

This refers to an individually issued decision that confirms the awarding of a foreign academic degree and grants access to higher education in Poland.

Documents Required for Diploma Recognition

- Diploma on which the recognition statement you wish to obtain
- Transcript of records / supplement / list of subjects and grades attached to the above mentioned diploma
- Previous document of education – document which was the basis for the admission to studies
- Transcript of records / supplement / list of subjects and grades attached to the previous diploma (if applicable)
- Translations of all the abovementioned documents (unless they are issued in: English, German, Spanish, Italian, Russian, Ukrainian, Belarusian). Translations should be done by a sworn translator.
- Identity card / passport
- Document stating the change of surname
- In the case of refugees – a refugee status document

Key facts

- Recognition is issued within 60 days from the date of submission of the complete set of required documents in the SYRENA System.
- Issued as a digitally signed PDF document.
- Document is issued in Polish.
- The service is free of charge.

You can find all the necessary information about this procedure via this link:

nawa.gov.pl/en/recognition/how-to-obtain-a-recognition-statement/diploma-of-higher-education

Subject registration (Bachelor's)

Note: There is no automatic course registration at SGH.

Students are required to register for courses themselves.

Full instructions for the bachelor's programme are provided **via the links below**

First semester declaration

IMPORTANT: Only part of the stages is described here. Full information is available below at the link: [Information for First-Year Students](#)

Preferences

29 August 10.00 a.m. – 3 September 2025 10.00 a.m.

Deletion of colliding courses

17 September 2025 10.00 a.m. – 18 September 2025 10.00 a.m.

Class Subscription for First-Stage Participants

20 September 2025 10.00 a.m. – 23 September 2025 10.00 a.m.

Joining the launched classes

27 September 2025 10.00 a.m. – 29 September 2025 10.00 a.m.

Apply for teacher's consent to join a class

4 October 2025 10.00 a.m. – 7 October 2025 10.00 a.m.

First semester mandatory courses

- Economic Geography (110431) or Economic History (110441)
- Mathematics (110491)
- Microeconomics I (110501)
- Basics of Law (110541)
- Corporate Social Responsibility (**e-learning**) (110028)
- Foreign languages (**You will be automatically assigned to groups**)
- Physical Education - **separate registration** ([Click here for full details](#))
- Introduction to Academic Culture (149971) (**registration in 2nd stage**)
- Introduction to Business Information Systems (110531)
- Study Methodology Proseminar (110011)

E-learning trainings ([e-sgh.pl](#)):

- Training on Fundamentals of Intellectual Property Protection (149961)
- Training on Occupational Health and Safety (BHP) (149991),

Information for the first year students

sgh.waw.pl/en/information-first-year-students-undergraduate-studies

Programme of study

sgh.waw.pl/en/study-plan-undergraduate-studies

Subject registration (Master's)

Note: There is no automatic course registration at SGH.

Students are required to register for courses themselves.

Full instructions for the master's programme are provided **via the links below**

First semester declaration

IMPORTANT: Only part of the stages is described here. Full information is available below at the link: [*Information for First-Year Students*](#)

Preferences

From Tuesday, 9 September 2025, at 10:00 AM to Thursday, 11 September 2025, at 10:00 AM.

Second stage – correction of declarations (+ groups exchange)

From Thursday, 18 September 2025, at 10:00 AM to Monday, 22 September 2025, at 10:00 AM.

One-time Removal (Resignation from course)

From 10.10.2025 (Friday), 10:00 a.m. to 03.11.2025 (Monday), 10:00 a.m.

Registration with teachers permission

from 01.10.2025 (Wednesday), 10:00 a.m. to 06.10.2025 (Monday), 10:00 a.m.

Note: You do not need to register for obligatory e-learning trainings: 24996 Training on Fundamentals of Intellectual Property Protection (e-learning), 24998 Library Training (e-learning), 24999 Training on Occupational Health and Safety (e-learning).

You need to complete them as soon as possible after logging in to [the e-SGH](#) once the semester starts.

First semester mandatory courses

- Foreign language (You will be automatically assigned to a group)
- Business Law
- History of Economic Thought (mandatory for most fields of study)

E-learning trainings ([e-sgh.pl](#)):

- Training on Fundamentals of Intellectual Property Protection
- Training on Occupational Health and Safety (BHP)
- Library Training

Information for the first year students

<https://www.sgh.waw.pl/en/information-first-year-students-graduate-studies>

Programme of study

<https://www.sgh.waw.pl/en/classes-schedules-graduate-studies>

Student ID card

What is a Student ID card?

It's a plastic and digital card confirming your student status in Poland. Pay the 22 PLN fee to your individual account (found on USOSweb). The card is issued once the payment is recorded.

Remember to renew it each semester at the Dean's Office.

If you have a PESEL number, you can add the card to the mObywatel app – it will work the same way.

What discounts are you entitled to?

- Public transport (bus, metro, tram, train)
- Trains: PKP, Polregio, Mazovian Railway (Koleje Mazowieckie), etc.
- Payment of PZU health insurance by SGH or discount on fees (more information on this in a special chapter)
- Discounts on visits to museums and other attractions

ISIC CARD

The International Student Identity Card (ISIC) - access to discounts in over 130 countries. You can apply online at isic.pl/en. To apply, you'll need a recent passport-style photo and proof of student status (e.g. confirmation from SGH or a student ID). Basic card costs 35 PLN and is valid for one year. In Poland the card is not accepted for public transport discounts, and not all venues recognise it.



SIM Cards / Transportation / Sport activities

SIM cards

There are four main mobile operators in Poland: T-Mobile, Orange, Play, Plus. Each operator offers discounts and bonuses for the first month as well as E-SIM (it allows you to add a SIM card after scanning a QR code, without using a physical slot). You can buy SIM cards in almost any shop, or register online before arriving in Poland (for example by using the Orange Flex app)

Public transport

Public transport tickets in Warsaw can be issued for 20- or 75-minute trips (for PLN 1.70 and PLN 2.20 respectively with a student discount).

You can also get tickets for 24 and 72 hours, one month or even three months. You can buy tickets at the stops, on public transport or via the banking app.

For more information on ticket prices, visit website wtp.waw.pl

Sport activities

In Warsaw, there are many sports activities, including free options in dorms like Grosik and Sabinki, as well as SGH sports classes. Popular paid gyms include Zdrofit and Well-Fitness. As a student, you can get a BeActive (ebeactive.pl) pass starting from 50 PLN/month—be sure to wait for frequent 1+1, 2+2, or 50% discounts for the best deals. Most memberships include group classes like aqua aerobics, stretching, and more.

Medical and psychological help

To receive health services under the National Health Fund (NFZ), **students must either hold their own insurance or be registered for insurance by a parent or the university.** The university will register a student if they have no other insurance entitlement. To obtain health insurance through the university, students must submit an application to the Educational Support Unit. **If a student gains another insurance entitlement, such as through employment, they must inform the university.**

Non-EU students can obtain insurance in Poland by signing a voluntary health insurance contract with the relevant NFZ branch and paying their own monthly premiums, unless they hold a Polish Card or a certificate of Polish descent, in which case the university covers their premiums. The customer service office in Warsaw is located at **ul. Chałubińskiego 8, 00-613 Warsaw, and can be contacted via email at KANCELARIA@NFZ-WARSZAWA.PL.**

It is important to note that upon receiving a Residence Card, the Pole's Card ceases to be valid, and so does the insurance contract based on it. Students can also be registered for health insurance by a parent, grandparent, or spouse who holds insurance entitlement. This coverage lasts until the student's 26th birthday, or until they gain their own entitlement, such as through employment.



What help can you get directly at SGH?



Primary Health Care

On the ground floor of SGH building "G" there is room 7 where students can receive free medical assistance.
More information on [the website](#).

Psychological Assistance

In order to improve the quality of life for the SGH community, it is possible to receive free psychological assistance. Individual 50-minute sessions of psychological support or shorter 15-20 minute consultations during open office hours are offered. Consultations in Polish, Ukrainian and English. Registration is done via email: psychologicalhelp@sgh.waw.pl.
More information on [the website](#).

Trusted Profile

The trusted profile (“Profil zaufany” in Polish) is used as a tool to confirm your identity, which is signed with an electronic signature.

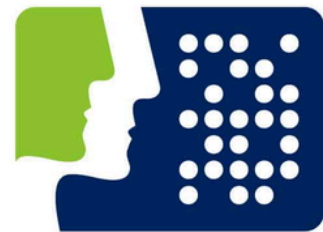
You can create a trusted profile in several ways, for example, by using a bank, a video call with an official or at a branch (more than 2,000 branches in Poland and abroad).

But what is it used for?

- Submitting an application and signing the document online
- Reporting the loss or destruction of an identity card
- Setting up a business
- Filing a tax declaration
- You can use it to log in to the Electronic Services Platform of the Social Insurance Institution (PUE ZUS), the Internet Patient Account (IKP), the e-Tax Office, etc.

We recommend doing it in our dormitory, Sabinki!

profil
zaufany



Adaptation days

“Adaptation Days” is a project that was created for students who are starting their studies at SGH. It is a joint initiative of the SGH Admission Office and the SGH Student’s Union. The event is organised before the start of the new academic year.

September 29–30 in 2025!

Onboarding

The Onboarding Programme at SGH is an initiative addressed to English-speaking first-year students who would like to receive support in the adaptation process in the first months of their stay in Poland. The main goal of the Onboarding Programme is to help integrate international students with the SGH community and to make it easier for them to acclimate in Poland. For more information contact admission@sgh.waw.pl or [+48 22 564 77 75](tel:+48225647775).

More info and agenda on:

<https://www.sgh.waw.pl/en/sgh-adaptation-days>



BUDDY PROJECT

The Buddy Project is one of the main initiatives of ESN SGH, created to support incoming international students during their stay in Warsaw.

We match Erasmus students with local SGH students (Buddies) through the Papaya platform, helping you adapt faster to life in Poland. Your Buddy can introduce you to student life, Polish culture, and our ESN community.

Throughout the semester, the Buddy Team also organizes various events such as:

Orientation Week
Integration games and meetups
Cultural activities and local trips

We're here to make your student-life unforgettable – and can't wait to meet you soon!

Our main communication channel is our WhatsApp Group, so don't forget to sign up!

chat.whatsapp.com/F57W57Y77HoErHeTwFuw5C



What applications you need to download?



An app for **browsing and comparing current promotional flyers** from various supermarkets, helping find the best deals on groceries and other essentials

Food delivery apps (Glovo, Uber Eats, Pyszne.pl) offering a wide range of dining options, enabling convenient ordering of meals from local restaurants with doorstep delivery.



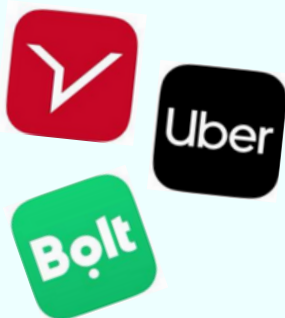
Mobile network management apps that allow checking usage, paying bills, and managing mobile services for Plus, Orange, T-Mobile, Play providers.

Allegro - Poland's largest online marketplace, where you can buy and sell a variety of products, from electronics to clothing, often at competitive prices.



Travel apps that help plan and book train journeys across Poland (PKP Intercity) and navigate public transportation systems in cities (Google Maps, Jakdojade).

Microsoft apps mainly for online lectures at SGH, essential for managing emails, schedules, and collaboration on projects.



Ride-hailing apps that provide quick and reliable transportation options, making it easy to get around city

Printing system: Step-by-Step

1. Download Global Protect

- Search for **GlobalProtect** in the **App Store** or **Google Play**
- Or download it directly from: <https://vpn.sgh.waw.pl>

2. Configure the VPN

- After opening the application, enter the portal address: **vpn.sgh.waw.pl**
- **Log in** using your SGH account credentials

3. Top up your printing account

- Go to: <https://cws.sgh.waw.pl:9443>
- **Log in** with your SGH account
- **Add funds** using BLIK or bank transfer

4. Send your files for printing

- Send via student email files you want to print to: **print@sgh.waw.pl**
- The files will be **automatically** added to your print queue.

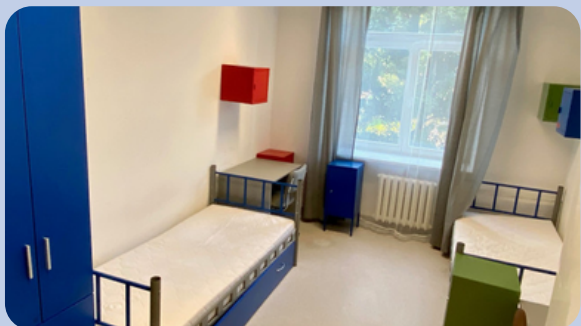
5. Print your documents

- **Go to a printer** on campus.
- **Tap your student ID card** on the reader to log in.
- **Select** the files from the queue and print them.

More information is available at:

<https://www.sgh.waw.pl/en/printing-and-scanning-central-printing-system>

Dormitories



SGH has two student dormitories: "Sabinki" and "Grosik":

1. Student dormitory "SABINKI"

Rooms in the dormitory are single or double. On each floor there are two bathrooms, showers and kitchens for shared use. Residents have access to a gym and laundry on floor -1; on the 1st floor - fitness room; on the 4th floor - the study room; outside - a basketball and volleyball court, tennis table and garden gazebo. **The cost is 950 PLN for a single room and PLN 770 for a double room per month.**

2. Student dormitory "GROSİK"

Student house No. 3 "Grosik" is freshly renovated. As a rule, there are four-person units, two double rooms that share a kitchen and a bathroom. There are 2 segments with 3 double rooms, a large kitchen and a separate toilet and bathroom. There are 4 segments with single rooms and 2 rooms for disabled people. There is also a gym, a study room and a TV room. There is no garden, but there is a small patio. **The cost is 945 PLN for a double room and PLN 1,155 for a single room per month.**

FEES

Apart from the fee within 7 days of signing the contract you should also pay a deposit in amount of 1100 PLN. Deposits and other fees are paid to the individual bank account number provided in the USOSweb system. The deposit is refunded at the end of the accommodation period (refers to monthly payments).

HOW TO APPLY?

Log in to the USOSweb system with your login and password to the SGH Network:
USOSweb -> click for all -> applications -> list of applications -> application for a dormitory.

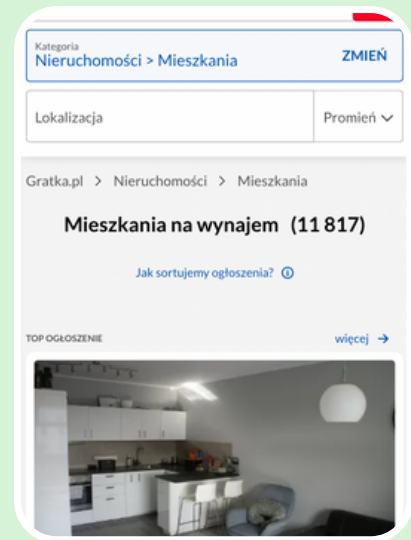
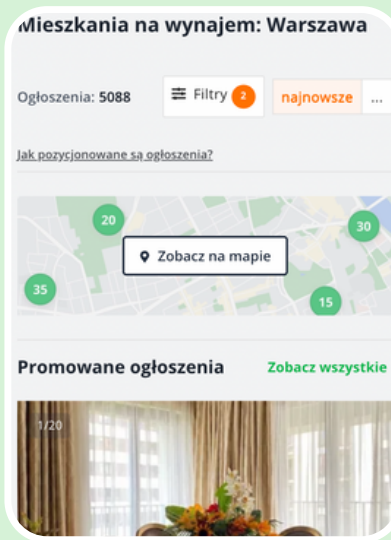
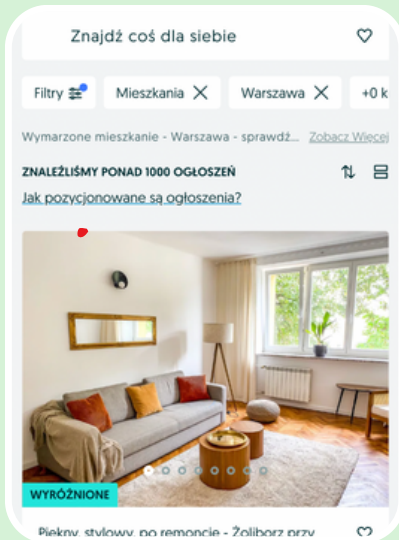
RESERVE LIST

Entries to the reserve list for the academic year 2025/2026 will be launched on 15 September 2025 at 12:00.

The reserve list is launched for people who did not apply for a dormitory on time or their application was considered negatively. Enrollment on the reserve list is conducted throughout the academic year.

Information about the assigned room is provided by phone or e-mail. The place is available for 48 hours. After that time, it is assigned to another person.

Lodging in Warsaw



What do you need to do first?

You should first determine your housing requirements, such as the number of occupants, your budget and your preferred location.

Where to look?

Agencies can be helpful in looking for a flat (promo code at the end of the guide), but bear in mind that their services are half to twice the monthly rent. Alternatively, you can look for a flat on your own on advertising websites such as OLX, Gratka, Otodom or Morizon. It is also worth searching groups on social networks such as Facebook.

What next?

Once you have found an interesting offer, make an appointment for a viewing to verify the condition and equipment. Then, after visiting, a rental agreement is usually signed. You should read the contract carefully and protect yourself against unfavourable terms and hidden costs. The most commonly used tenancy agreements are **the traditional tenancy and the occasional tenancy** (najem tradycyjny i okazjonalny in Polish). Their main difference is that with a traditional tenancy, the landlord cannot freely increase the rent, whereas with an occasional tenancy, the rent can be increased on the basis of contractual clauses. The second major difference is that with an occasional tenancy, the procedure for evicting a tenant is much simpler.

Student organisations

Participating in student organizations helps you integrate into a new environment through social contacts and develop language skills. It fosters leadership, teamwork, and event organization skills, enhancing your job market appeal.

- **ESN SGH**

Erasmus Student Network SGH (ESN SGH) is a branch of ESN in Poland, focusing on promoting the Erasmus+ exchange program supporting exchange students.

More info: facebook.com/esnsgh



- **AIESEC**

AIESEC is a global organisation run by young people in over 100 countries. It champions diversity and inclusion, with projects like Alumni, Global Host, and Buddy Programme.

More info: aiesec.org



- **International Economic Society**

IES is a student organisation for those interested in economics, diplomacy, and global markets. It runs projects like Embassy Nexus and the Grand International Economic Summary.

More info: facebook.com/profile.php?id=61558976330547



- **Global Learning Community**

Global Learning Community is student-led organisation, dedicated to personal development and professional growth of all students.

More info: facebook.com/globallearningcommunity



Find all organizations at:

drive.google.com/file/d/1BO6jPrJKZlZx17qdHnDHGHW0-6qcfBn2



TEMPORARY RESIDENCE CARD

Why is it needed?

Applying for a temporary residence permit will allow you not to worry about renewing your visa every year, allows you to open an account in any bank, simplifies administrative procedures and obtain a permanent residence permit. The card also makes it easier to travel within the European Union.

Which documents you should submit?

- Temporary residence permit application form completed in accordance with the instructions
- Three recent photos
- Copy of a valid travel document
- Certificate from the Dean's Office of the Warsaw School of Economics of enrolment or continuation of studies
- Proof of payment of fees if taking up or continuing studies against payment
- Documents confirming health insurance
- Documents confirming the possession of sufficient financial means to cover the costs of living and return travel to the country of origin or residence.

More information:

en.migrant.wsc.mazowieckie.pl/pl/procedure/residence-permit-on-the-grounds-of-studying-science



PERMANENT RESIDENCE CARD

Why is it needed?

The permanent residence card allows you to live and work legally without the need for regular renewal. In addition, the permanent residence card gives access to a number of privileges, such as full access to public services and the use of medical care, education and benefits. The card also facilitates travel within the European Union.

Which documents you should submit?

- Valid travel document
- Completed application form
- 4 photographs which are undamaged, in colour, of good sharpness, 35 mm x 45 mm in size
- Documents necessary to confirm the data contained in the application and the circumstances justifying the application for a permanent residence permit
- Documents confirming the circumstances indicated in the application
- Documents confirming the intention to stay in the Republic of Poland permanently

More information: bip.mazowieckie.pl/sprawa-do-zalatwienia/336/zezwozenie-na-pobyt-staly

Student Exchanges

SGH collaborates with a vast network of over 300 partner universities worldwide. The most popular aspect of this collaboration is student exchange. SGH offers various exchange programs, which include:

Erasmus+

This programme allows students to study or undertake internships in 34 participating countries, including EU member states, Norway, Turkey, and others. Students can participate at any level of their studies for up to 12 months. Graduates can go on an internship within one year after completing their studies.

Bilateral Agreements

These exchanges are based on agreements between SGH and universities outside Europe. Students are exempt from tuition fees at the host institution but must cover travel and living expenses. Scholarships are not available, except in some Asian countries.

CIVICA Engage Track

A programme for undergraduate students offering a study path focused on social engagement. Participants can choose from three options, which include courses at partner universities and projects. Completion of the programme results in a certificate.

PIM (Partnership in International Management)

A consortium of prestigious economic universities, facilitating student exchanges at the master's level. Participants are exempt from tuition fees at the host institution but need to cover their own living costs.

About all exchange opportunities you can read more here:
sgh.waw.pl/en/erasmus-bilateral-agreements-pim

To see the requirements:
sgh.waw.pl/en/selection-exchange-programs

Promotions and discounts

Mobile telephony

- PLN 30 for registering a phone number in Orange Flex after entering the recommendation code - DARYAT4P8

Taxis, buses, scooters and bicycles

- 3 x PLN 10 for new FreeNow taxi users - WDROGE
- 20 minutes free scooter rides with Dott - AIYMWGP
- PLN 20 off your first ride on a Tier scooter - X04SRVC
- 20% discount on your first FlixBus ride - [open link](#)
- 20 minutes of free Veturilo bike rides as many times as you like - download and enjoy
- PLN 15 discount on your first Bolt taxi ride - MAKSIMKRLZ
- 70% discount on your first two Uber rides - STUDENCKI

Food delivery

- Get a PLN 10 discount on your first 4 orders at Bolt - Z3K7WV2
- A discount of PLN 15 on your first order in Pyszne.pl - [open link](#)
- Discount of PLN 25 on the first 3 orders when buying from PLN 40 in Uber Eats - eats-hx5uoy4wdp

Carsharing

- Discount PLN 30 on first rides in Traficar - [EFiLChTECz](#)

Authors

Editor-in-chief

Maksim Kramianeuski

Editorial team

Veranika Naliuka

Yan Herasimchyk

Darya Yesko

Aliaksandr Khatsianevich